

All that Jazz

A Free Project Sheet
NOT FOR RESALE

By Hannah of Pencil & Ink Studios

Quilt 1

Quilt Design by Heidi Pridemore



Skill Level: Advanced Beginner



facebook

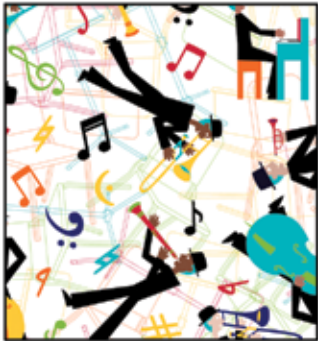
Finished Quilt Size: 64" x 82"
49 West 37th Street, 14th floor, New York, NY 10018
Toll Free: 800-294-9495
fax: 212-679-4578
www.blankquilting.net

Please check our website for pattern updates before starting this project.

ALL THAT JAZZ

Quilt 1

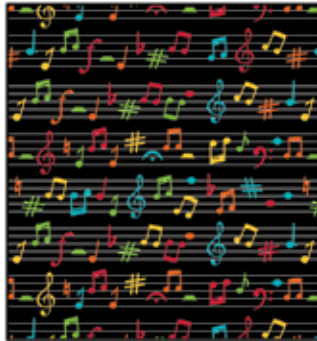
Fabrics in the All that Jazz Collection



Musicians
White – 2275-01



Musical Notes
White – 2276-01



Sheet Music
Black – 2277-99



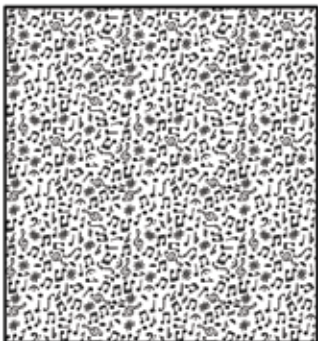
Music Words
Black – 2278-99



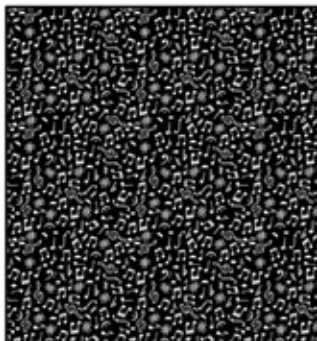
Music Border Stripe
Black – 2279-99



Musical Instruments
Black – 2280-99



Mini Musical Notes
White – 2281-01



Mini Musical Notes
Black – 2281-99



Music Panel - 24 inches
Red – 2282P-88

Select Fabrics from the
Starlet Collection



Navy
6383-Navy



Red
6383-Red



Turquoise
6383-Turquoise



White
6383-White



Yellow
6383-Yellow

Materials

1 panel	Musical Panel-24 inches - Red (A)	2282P-88
1 2/3 yards	Starlet - Navy (B)	6383-Navy
7/8 yard	Musicians - White (C)	2275-01
1/2 yard	Sheet Music - Black (D)	2277-99
3/8 yard	Starlet - Yellow (E)	6383-Yellow
3/8 yard	Starlet - Turquoise (F)	6383-Turquoise
1/2 yard	Music Words - Black (G)	2278-99
7/8 yard	Musical Notes - White (H)	2276-01
1/2 yard	Musical Instruments - Black (I)	2280-99
2/3 yard	Starlet - Red (J)	6383-Red*
5 yards	Mini Musical Notes - Black (Backing)	2281-99

*Includes binding

Batting: 72" x 90"

(Recommended: Air Lite® Colour Me 100% Cotton)

Cutting Instructions

Please note: All strips are cut across the width of fabric (WOF) from selvage to selvage edge unless otherwise noted.

From the Musical Panel - 24 inches - Red (A):

- Fussy cut (1) 22 1/2" x 42 1/2" rectangle, centered on the panel.

From the Starlet - Navy (B), cut:

- (4) 2 1/2" x WOF strips. Sew the strips together end to end with diagonal seams and cut (2) 2 1/2" x 78 1/2" strips.
- (4) 2 1/2" x WOF strips. Sew the strips together end to end with diagonal seams and cut (2) 2 1/2" x 64 1/2" strips.
- (4) 2 1/2" x WOF strips. Sew the strips together end to end with diagonal seams and cut (2) 2 1/2" x 62 1/2" strips.
- (3) 2 1/2" x WOF strips. Sew the strips together end to end with diagonal seams and cut (2) 2 1/2" x 48 1/2" strips.
- (2) 2" x 42 1/2" WOF strips, piece as needed.
- (2) 2" x 25 1/2" WOF strips.
- (3) 1 1/2" x WOF strips. Sew the strips together end to end with diagonal seams and cut (2) 1 1/2" x 52 1/2" strips.
- (2) 1 1/2" x 36 1/2" WOF strips.

From the Musicians - White (C), cut:

- (3) 5 1/2" x WOF strips. Sew the strips together end to end with diagonal seams and cut (2) 5 1/2" x 44 1/2" strips.
- (2) 4 1/2" x 34 1/2" WOF strips.

From the Sheet Music - Black (D), cut:

- (3) 2 1/2" x WOF strips. Sew the strips together end to end with diagonal seams and cut (2) 2 1/2" x 54 1/2" strips.
- (2) 2 1/2" x 40 1/2" WOF strips.

From the Starlet - Yellow (E), cut:

- (4) 2 1/2" x WOF strips. Sub-cut (51) 2 1/2" squares.

From the Starlet - Turquoise (F), cut:

- (4) 2 1/2" x WOF strips. Sub-cut (51) 2 1/2" squares.

From the Music Words - Black (G), cut:

- (2) 6 1/2" x WOF strips. Sub-cut (11) 6 1/2" squares.

From the Musical Notes - White (H), cut:

- (4) 6 1/2" x WOF strips. Sub-cut (21) 6 1/2" squares.

From the Musical Instruments - Black (I), cut:

- (2) 6 1/2" x WOF strips. Sub-cut (10) 6 1/2" squares.

From the Starlet - Red (J), cut:

- (8) 2 1/2" x WOF strips for the binding.

From the Mini Musical Notes - Black (Backing), cut:

- (2) 90" x WOF strips for the backing. Sew the strips together and trim to make the 72" x 90" back.

Block Assembly

Note: Pay attention to the unit orientations when assembling various components. Use a 1/4" seam allowance with right sides together (RST) unless otherwise noted.

1. Sew (1) 2" x 42 1/2" Fabric B strip to each side of the 22 1/2" x 42 1/2" Fabric A rectangle. Sew (1) 2" x 25 1/2" Fabric B strip to the top and to the bottom of the Fabric A rectangle to make the Center Block (Fig. 1). **Trim the block to measure 24 1/2" x 44 1/2"**.

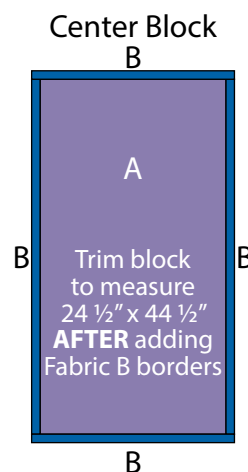


Fig. 1

2. Sew together (15) 2 ½" Fabric F squares and (14) 2 ½" Fabric E squares, alternating them from top to bottom, to make the Inner Left Side Border (Fig. 2).

3. Repeat Step 2 and refer to Figures 3-4 for fabric identification and placement to make the Inner Right Side Border, the Inner Top Border and the Inner Bottom Border.

Inner Left
Side Border



Fig. 2

Inner Right
Side Border



Fig. 3

Inner Top/Bottom Border



Fig. 4

4. Follow Figure 5 and sew together (6) 6 ½" Fabric H squares, (3) 6 ½" Fabric G squares and (2) 6 ½" Fabric I squares to make the Outer Left Side Border.

Outer Left
Side Border



Fig. 5

Outer Right
Side Border

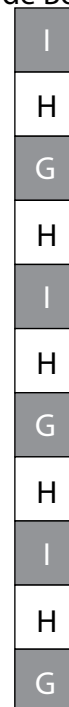


Fig. 6

Outer Top Border



Fig. 7

Outer Bottom Border



Fig. 8

Quilt Top Assembly

(Follow the Quilt Layout while assembling the quilt top.)

6. Sew (1) 5 ½" x 44 ½" Fabric C strip to each side of the Center Block. Sew (1) 4 ½" x 34 ½" Fabric C strip to the top and to the bottom of the Center Block.

7. Sew (1) 1 ½" x 52 ½" Fabric B strip to each side of the Center Block. Sew (1) 1 ½" x 36 ½" Fabric B strip to the top and to the bottom of the Center Block.

8. Sew (1) 2 ½" x 54 ½" Fabric D strip to each side of the Center Block. Sew (1) 2 ½" x 40 ½" Fabric D strip to the top and to the bottom of the Center Block.

9. Sew the Inner Left Side Border and Inner Right Side Border to the left and to the right sides of the Center Block.

10. Sew the Inner Top Border and Inner Bottom Border to the top and to the bottom of the Center Block.

11. Sew (1) 2 ½" x 62 ½" Fabric B strip to each side of the Center Block. Sew (1) 2 ½" x 48 ½" Fabric B strip to the top and to the bottom of the Center Block.

12. Sew the Outer Left Side Border and the Outer Right Side Border to the left and to the right sides of the Center Block.

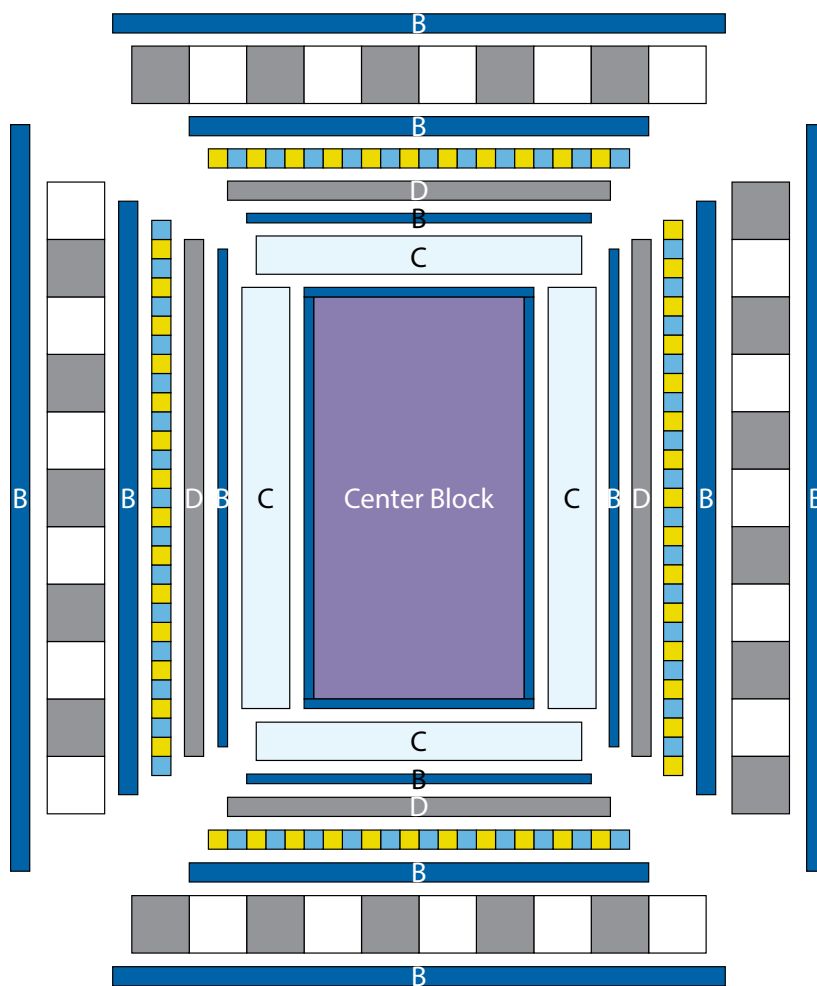
13. Sew the Outer Top Border and Outer Bottom Border to the top and to the bottom of the Center Block.

14. Sew (1) 2 ½" x 78 ½" Fabric B strip to each side of the Center Block. Sew (1) 2 ½" x 64 ½" Fabric B strip to the top and to the bottom of the Center Block to make the quilt top.

15. Layer and quilt as desired.

16. Sew the (8) 2 ½" x WOF Fabric J strips together, end to end with 45-degree seams, to make the binding. Fold this long strip in half lengthwise with wrong sides together and press.

17. Bind as desired.



Quilt Layout

Every effort has been made to ensure that all projects are error free. All the information is presented in good faith, however no warranty can be given nor results guaranteed as we have no control over the execution of instructions. Therefore, we assume no responsibility for the use of this information or damages that may occur as a result. When errors are brought to our attention, we make every effort to correct and post a revision as soon as possible. Please make sure to check www.blankquilting.net for pattern updates prior to starting the project. We also recommend that you test the project prior to cutting for kits. Finally, all free projects are intended to remain free to you and are **not for resale**.